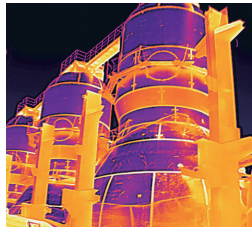




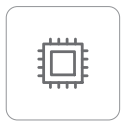
# ATR1280

## HD Online Thermal Camera

ATR1280 is a high-definition, high-performance electric-focusing temperature measurement thermal camera equipped with a 1280×1024 high-resolution infrared detector and an electric focusing lens, ensuring clear images and precise temperature measurements. It supports the GigE protocol and outputs high-speed video streams. With professional thermographic analysis software, the device can meet the application requirements of high-definition images and accurate temperature measurement in education and scientific research, industrial automation, and other fields.



### Product Highlights



**1280×1024  
infrared resolution**

Clear images



**GigE vision**

High-speed data  
transmission



**-20°C to +550°C  
Wide measurement range**

Suitable for application in  
multiple scenarios



**NETD<50mK**

Distinguish minute  
temperature differences



**Electric focusing**

Clear and accurate

### Lens Parameters

Model	ATR1280
Focal Length	19mm
FOV	44°×35.8°
IFOV	0.63mrad

## Specifications

### Thermal Imaging Parameters

Detector	Uncooled VOx detector
Infrared Resolution	1280×1024
Pixel Pitch	12μm
Spectral Band	8μm~14μm
NETD	<50mK

### Temperature Measurement

Measurement Range	-20°C~+150°C, 0°C~550°C
Measurement Accuracy	±2°C or ±2% of readings
Temperature Measurement Correction	Reflected temperature, ambient temperature, atmospheric transmissivity, object emissivity, distance
Measurement Tool	Settings of measurement rules for a total of 12 points, lines and areas, supporting isotherm setting
Temperature Width Stretch	Support temperature width stretch

### Image and Video

Frame Rate	15Hz
Palettes	18 color palettes including black-hot, white-hot, iron red, rainbow, etc.
Thermal Image Capture	Support thermal image capture and secondary analysis
Mirroring	Horizontal/Vertical/Diagonal
Digital Zoom	1.0~8.0 continuous zoom (step size: 0.1)

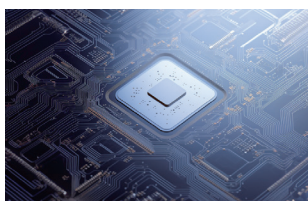
### System Interface

Communication Interface	RJ45, supporting Gigabit network; 1-channel RS485, supporting Pelco-D protocol expansion (optional)
Network protocol	TCP, UDP, ICMP, DHCP
Interface Protocol	GigE Vision

### Device Specifications

Operating Temperature	-20°C~+60°C
Power Supply Mode	6~16V DC
Typical Power Consumption	≤4.5W
Dimensions	70mm×63mm×143mm (with 19mm lens)
Weight	About 725g (with 19mm lens)

## Applications



Electronic Circuit



Automation



Electric Power



Machine Vision

Raythink Technology Co., Ltd.

Company Address: No.5 Wanshoushan Road, Fulaishan Street, Yantai Area of China (Shandong) Pilot Free Trade Zone  
Postal Code: 264000 Official Website: <http://www.raythink-tech.com> Service Email: [sales@raythink-tech.com](mailto:sales@raythink-tech.com)

\*The information is for illustrative purposes only. The pictures and technical specifications are subject to change without prior notice. Sample No.: G2024-ATR1280-2P001