



# CX20 Series Handheld Thermal Camera

Provided with an infrared detector with a  $256 \times 192$  resolution, CX20 Series employs real-time AI super-resolution to enhance its resolution to  $512 \times 384$ . Featuring a 3.5-inch HD display and optional laser pointer and rangefinder, it enables precise fault location and significantly improves inspection efficiency.



## Product Highlights

### High-Resolution Thermal Imaging, Powered by Real-Time AI Super-Resolution

- $256 \times 192$  resolution, enhanced to  $512 \times 384$  with real-time AI super-resolution
- NETD as low as 40mK, detecting minute temperature differences
- 3.5-inch high-resolution display, presenting thermal images in detail



### Laser Pointer + Laser Rangefinder

- The CX20 Pro/Ultra models feature an upgraded laser pointer for fast targeting of temperature anomalies
- The CX20 Ultra further integrates a laser rangefinder, enabling 3D spatial positioning of anomalies and enhancing on-site inspection efficiency



### Fully Upgraded User Experience

- 18W quick charging ensures worry-free performance during intensive operations
- Built-in Wi-Fi and UVC image transmission across the entire series for faster and wireless image sharing



### Software+ : Complete Software PC Client and App

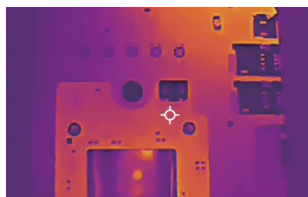
- Equipped with a professional mobile/PC temperature analysis platform, supporting secondary analysis



## Specification

Model	CX20	CX20 Pro	CX20 Ultra
Thermal Imaging			
Detector Type	12μm		
Infrared Resolution	256×192		
Super-Resolution	512×384		
Spectral Band	7.5-14μm		
NETD	<40mK		
Infrared Frame Rate	25Hz		
Focal Length	3.2mm	4.3mm	
FOV	56°×42°	40°×30°	
Spatial Resolution (IFOV)	3.8mrad	2.79mrad	
Focus Mode	Fixed focus		
Minimum Imaging Distance	0.3m	0.7m	
Measurement Range	Low temperature range: -20~150°C; high temperature range:100~550°C; auto switching		
Measurement Accuracy	±2% or ±2°C of readings, whichever is greater		
Image Display			
Display	3.5-inch, 480×640 resolution		
Visible Light Camera	/	2 megapixels	
Digital Zoom	2 ×, 4 ×		
Palettes	7		
Image Mode	Infrared	Infrared, fusion, PIP, visible light	
Temperature Width Stretch	Automatic/Manual		
Measurement and Analysis			
Analysis Functions on the Device	Central point/Highest temperature point/Lowest temperature point/3 custom points/Temperature difference		Central point/Highest temperature point/Lowest temperature point/6 custom points/Temperature difference
Laser Pointer	Not support		Support
Laser Rangefinder (class 1)	Not support		Support, max detection range: 4m
Supporting Software	PC (Infrared Analysis Software) or Mobile (iOS/ Android APP)		
Image Storage			
Storage Medium	32GB Internal Memory		
System Functions			
Temperature Alarm	Support full-frame highest/lowest temperature alarm; automatic image capture at alarm time (with temperature data)		
Alarm Type	Image pop-ups	Image pop-ups, flash prompts	
Video Transmission	UVC (including full-frame temperature data) + Wi-Fi (excluding full-frame temperature data)		
Communication Protocol	USB, Wi-Fi		
Power Management	Adjustable (Automatic shutdown, 5 min, 10 min, 20 min, 120 min)		
Others			
Battery	Built-in rechargeable lithium-ion battery		
Charging Mode	USB Type-C		
Battery Life	6h		
Tripod Socket	Support		
Operating Temperature	-10°C ~ +50°C		
Operating Humidity	10% ~ 95% (non-condensing)		
Storage Temperature	-20°C ~ +60°C		
IP Grade/Drop Protection	IP54/2m		
Shock and Vibration	Shock: 25g (IEC 60068-2-27); vibration: 2.5g (IEC 60068-2-6)		
Weight and Dimensions	500g, 246×101×85mm		
Authentication	CB/CE/CMA		
Packing List	USB cable, user manual, certificate of qualification, calibration certificate, portable bag	USB cable, user manual, certificate of qualification, calibration certificate, charger, portable bag	

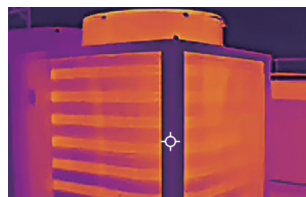
## Applications



Circuit Maintenance



Power Maintenance



HVAC Leak Detection



Equipment Maintenance

Raythink Technology Co., Ltd.

Company Address: No.5 Wanshoushan Road, Fulaishan Street, Yantai Area of China (Shandong) Pilot Free Trade Zone  
Postal Code: 264000 Official Website: <http://www.raythink-tech.com> Service Email: [sales@raythink-tech.com](mailto:sales@raythink-tech.com)

\*The information is for illustrative purposes only. The pictures and technical specifications are subject to change without prior notice. Sample No.: G2025-CX20-2P001