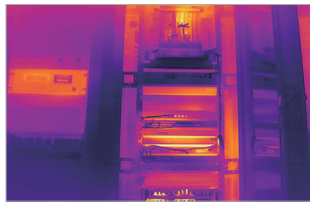




FC1 Series

Dual-Spectrum Turret Camera

FC125T dual-spectrum turret camera equipped a 256×192 resolution, $12\mu\text{m}$ pixel pitch thermal detector and a 5MP visible light sensor. It support tripwire/intrusion detection with AI human/vehicle classification algorithm. Meanwhile, it can analyze temperature and detect fire point. It can be used for perimeter protection and fire prevention in residential areas and commercial facilities.



12 μm Uncooled Infrared Detector

Adopting the latest $12\mu\text{m}$ uncooled infrared detectors, integrated with advanced infrared imaging algorithms for better image quality.

Accurate Temperature Measurement

Measurement range from -20°C to 550°C , accuracy $\pm 2^{\circ}\text{C}$ or 2%.

Intelligent Alarm

Supports alarm linkage for multiple events, as well as audible and visual alarms.

Dual-Spectrum Imaging

All-weather, 24/7 security monitoring with dual thermal&visible light imaging.

AI Target Recognition

Smart video content analysis, human/vehicle recognition on thermal channel for crossline/intrusion detection.

Platform Integration

Support ONVIF, provide SDK&demo for development; provide NVR and VMS software for application.

Specifications

Technical Specifications	FC125T	
	Thermal Module	
Detector Type	VOx, uncooled FPA detector	
Spectral Range	8~14μm	
NETD	≤40mK(@25°C,F#1.0,25Hz)	
Resolution	256×192	
Pixel Pitch	12μm	
Focal Length	3.2mm	7mm
	Optical Module	
Sensor	5MP 1/2.7" CMOS	
Maximum Image Resolution	2560×1920	
Focal Length	4mm	8mm
IR Distance	30m	
	Temperature Measurement	
Measurement Range	-20°C~+550°C	
Measurement Accuracy	±2°C or ±2%	
Measurement Rules	Support 4 temperature measurement rules(fullframe, point, line, area)	
	Smart Function	
Fire Detection	Support	
VCA	Smart video content analysis, human/vehicle recognition on thermal channel for crossline/intrusion detection	
Linkage Action	Video/ Snapshot/Email/Alarm output/sound and light alarm	
	System Interface	
Power	DC 12V±25% / POE(802.3af)	
Network	1×RJ45 10M/100M self-adaptive interface	
Audio Input	1×input	
Audio Output	1×output	
Alarm Input	2×input	
Alarm Output	1×output	
Storage Interface	Micro SD card (up to 256G)	
Reset Button	Support	
RS485 Interface	1×RS485	
	General	
Work Environment	-40°C~+70°C ; <95%RH	
Protection	IP66	
Power Consumption	≤5W	
Dimensions (mm)	Φ129×96	
Weight	≤0.8kg	

Application Scenarios



Perimeter Protection



Charging Pile



Electric Temperature Measurement



Warehouse

Raythink Technology Co., Ltd.

✉ sales@raythink-tech.com

☎ +86-19806191838

🌐 www.raythink-tech.com

📍 Room 3002, Building 2, No.5 Wanshoushan Road, Fulaishan Street, Yantai Area of China (Shandong) Pilot Free Trade Zone

■ This manual is illustrative only. Technical specifications are subject to change without prior notice.