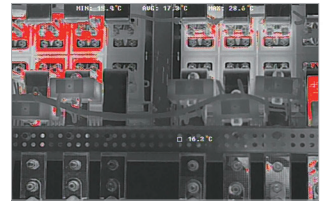
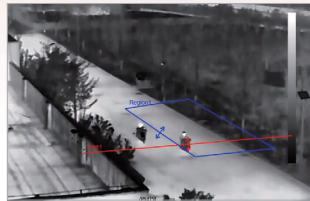
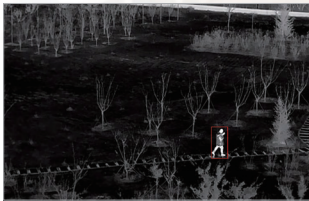




FC4 Series

Dual-Spectrum Bullet Camera

FC4T dual-spectrum bullet camera equipped a high-resolution, 12 μ m pixel pitch thermal detector with various lens options, and a 5MP visible light sensor. It supports tripwire/intrusion detection and it integrated temperature analysis methods and fire detection function. It can be used for perimeter protection and fire prevention in residential areas and commercial facilities.



12 μ m Uncooled Infrared Detector

Adopting the latest 12 μ m uncooled infrared detectors, integrated with advanced infrared imaging algorithms for better image quality.



Accurate Temperature Measurement

Measurement range from -20°C to 550°C, accuracy $\pm 2^\circ\text{C}$ or 2%.



Intelligent Alarm

Supports alarm linkage.



Dual-Spectrum Imaging

All-weather, 24/7 security monitoring with dual thermal&visible light imaging.



Intelligent Video Analysis

Support tripwire/intrusion detection, as well as intelligent detection of fire point.



Platform Integration

Support ONVIF, provide SDK&demo for development; provide NVR and VMS software for application.

Specifications

Technical Specifications	FC435T				FC465T				
	Thermal Module								
Detector Type	VOx, uncooled FPA detector								
Spectral Range	8~14μm								
NETD	≤40mK(@25°C,F#1.0,25Hz)								
Resolution	384×288				640×512				
Pixel Pitch	12μm								
Focal Length	9.1mm	13mm	19mm	25mm	9.1mm	13mm	19mm	25mm	35mm
	Optical Module								
Sensor	5MP 1/2.8" Progressive Scan CMOS								
Focal Length	6mm	6mm	12mm	12mm	4mm	6mm	6mm	12mm	12mm
IR Distance	40m								
	Dual-Spectrum								
Bi-Spectrum Image Fusion	Support								
Picture in Picture	Support								
	Temperature Measurement								
Measurement Range	-20°C~ +550°C								
Measurement Accuracy	±2°C or ±2%								
Measurement Rules	Support 4 temperature measurement rules(fullframe, point, line, area)								
	Smart Function								
Fire Detection	Support								
VCA	Support Line crossing&Intrusion detection								
2-Way Audio	Support								
Linkage Action	Video/ Snapshot/Email/Alarm output/sound and light alarm								
	System Interface								
Power	DC 12V±25% / POE(802.3at)								
Network	1×RJ45 10M/100M self-adaptive interface								
Audio Input	1×input								
Audio Output	1×output								
Alarm Input	2×input								
Alarm Output	2×output								
Storage Interface	Micro SD card (up to 256G)								
Reset Button	Support								
RS485 Interface	1×RS485								
	General								
Work Environment	-40°C~ +70°C; <95%RH								
Protection	IP66								
Certification	CE,ROHS,CE-EMC Test Report, FIPS 140-3 Level 3								
Power Consumption	≤8W								
Dimensions (mm)	319.5×121.5×103.6								
Weight	≤1.8kg								

Application Scenarios



Perimeter Protection



Charging Pile



Warehouse Security



Power Monitoring

Raythink Technology Co., Ltd.

✉ sales@raythink-tech.com

☎ +86-19806191838

🌐 www.raythink-tech.com

📍 Room 3002, Building 2, No.5 Wanshoushan Road, Fulaishan Street, Yantai Area of China (Shandong) Pilot Free Trade Zone

■ This manual is illustrative only. Technical specifications are subject to change without prior notice.