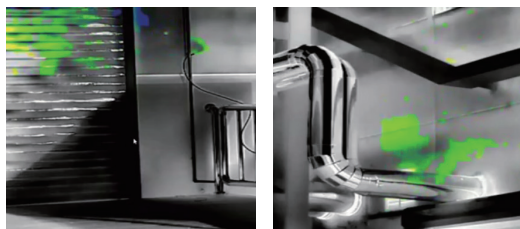




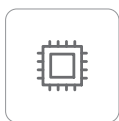
# TE464G1

## Explosion-proof Gas Imaging PTZ

TE464G1 is a high-performance dual-spectrum gas cloud imaging camera featuring an advanced uncooled infrared detector with a thermal sensitivity of less than 20mK. It holds dual explosion-proof certifications and has a stainless steel body with an IP68 ingress protection rating. The device supports multiple protocols including Modbus TCP, ONVIF, and GB28181, and supports secondary development. It can detect Methane (CH<sub>4</sub>), Sulfur Dioxide (SO<sub>2</sub>), Freon (R-134a, R-152a) and other gases, and has significant applications in industries such as petroleum extraction and coal processing.



### Product Highlights



640×512 infrared resolution  
Clear images



Capable of detecting Methane, Sulfur Dioxide, Freon (R-134a, R-152a), and other gases



Dual explosion-proof certification  
Suitable for various chemical scenarios



Stainless steel shell  
IP68 grade

### Applications



Petroleum Extraction



Industrial Chemicals



Coal Processing



Emergency Response and Environmental Protection

## Specifications

### Thermal Imaging

Detector Type	VOx uncooled FPA detector
Spectral Band	7~8.5μm
NETD	≤20mK(@25°C,F#1.0,25Hz)
Resolution of Detector	640×512
Pixel Size	12μm
Focal Length	25mm electric focusing lenses

### Visible Light Parameters

Sensor	4MP 1/1.8" Progressive Scan CMOS
Resolution	2688×1520
Focal Length	6.5~130mm, 20x

### Gas Detection

Gases Detectable	Methane (CH <sub>4</sub> ), Sulfur Dioxide (SO <sub>2</sub> ), Freon (R-134a, R-152a) and other gases
------------------	---

### PTZ

Horizontal Movement	360° continuous, 0.1°~40°/s
Vertical Movement	-90°~+90°, 0.1°~40°/s
Preset Point	256
Scan Mode	Preset point/Patrol inspection group/Pattern/Linear scanning/Area scanning
Wiper	Wiper

### Temperature Measurement

Measurement Range	-20°C~+550°C
Measurement Accuracy	±2°C or ±2% (which is the larger)
Temperature Measurement & Analysis	Support global, point, line, and area temperature measurement rules as well as alarm linkage

### Intelligent Functions

Fire Point Detection	Support
Intelligent Detection	Support tripwire intrusion, and regional intrusion detection
Voice Intercom	Support
Alarm Linkage	Video taking/Image capture

### System Interface

Power Interface	AC85~220V
Communication Interface	RJ45, supporting Gigabit network; 1-channel RS485, supporting Pelco-D protocol expansion (optional)
Audio Interface	1 Input / 1 Output
Storage Interface	Support Micro SD card (up to 256G)
Reset Button	Support
Serial Port	1-channel RS485 interface, supporting Pelco protocol expansion

### General Specifications

Operating Environment	-40°C~+60°C; <90%RH
IP Grade	IP68, Ex d II C T6 Gb/Ex tD A21 IP68 T80°C
Power Consumption	max. 100w
Dimensions	484.5mm×303mm×410 mm
Weight	27kg

## Raythink Technology Co., Ltd.

Company Address: No.5 Wanshoushan Road, Fulaishan Street, Yantai Area of China (Shandong) Pilot Free Trade Zone Postal Code: 264000

Official Website: <http://www.raythink-tech.com> Service Email: [sales@raythink-tech.com](mailto:sales@raythink-tech.com)

\*The information is for illustrative purposes only. The pictures and technical specifications are subject to change without notice. Sample No.: S2025-TE464G1-2P001