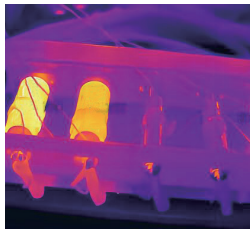
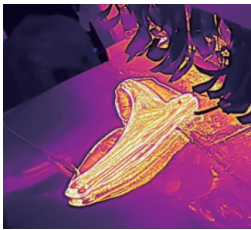




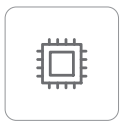
# TN430

## Fixed-mount Thermal Camera

TN430 is a high-performance and high-accuracy thermal camera with an uncooled infrared FPA detector. It can provide clear infrared images and accurate temperature measurement. TN430 supports multiple communication protocols such as Modbus TCP, Onvif and GB28181. Featuring compact dimension and low power consumption, is easy for system integrations in machine vision, electric power, railway transportation industrial automation, and other scenarios.



### Product Highlights



**384×288  
infrared resolution**

Clear images

**50Hz**

**A frame rate of 50Hz**

Synchronous transmission  
of temperature data and  
image data



**-20°C to +650°C  
Wide measurement range**

Suitable for application in  
multiple scenarios



**Compact size and  
multiple lenses option**

Convenient for  
integrated design



**Multiple protocols  
and interfaces**

Easy for back-end integration

### Lens Parameters

Model	TN430			
Focal Length	4.1mm	9.1mm	13mm	25mm
FOV	62.1°×47.2°	29.1°×21.7°	19.7°×14.9°	10.4°×7.8°
IFOV	2.93mrad	1.32mrad	0.92mrad	0.48mrad

## Specifications

### Thermal Imaging Parameters

Detector	Uncooled VOx detector
Infrared Resolution	384×288
Pixel Pitch	12μm
Spectral Band	7.5μm~14μm
NETD	≤40mK

### Temperature Measurement

Measurement Range	-20°C~+150°C, 0°C~650°C
Measurement Accuracy	±2°C or ±2% of readings
Temperature Measurement Correction	Reflected temperature, ambient temperature, atmospheric transmissivity, object emissivity, distance
Measurement Tool	Settings of measurement rules for a total of 12 points, 12 lines, and 12 areas, support isotherm setting
Temperature Width Stretch	Support temperature width stretch

### Image and Video

Frame Rate	50Hz
Palettes	20 color palettes including black-hot, white-hot, iron red, rainbow, etc.
Video Standards	H.264, H.265
Thermal Image Capture	Support thermal image capture and secondary analysis
Mirroring	Horizontal/Vertical/Diagonal
Digital Zoom	1.0~8.0 continuous zoom (step size: 0.1)

### System Interface

Communication Interface	RJ45, 10M/100M adaptive Ethernet port; 1-channel RS485 interface, support extended Pelco-D protocol
Audio Interface	1-channel audio input, 1-channel audio output
Video Interface	1-channel analog video
Alarm Interface	1-channel alarm input, 1-channel alarm output
Storage Interface	Support TF card
Network Protocol	IPv4, HTTP, HTTPS, SMTP, FTP, UPnP, DNS, DDNS, NTP, RTCP, RTSP, RTP, TCP, UDP, IGMP, ICMP, DHCP
Interface Protocol	Modbus TCP, ONVIF, GB28181, MQTT

### Device Specifications

Operating Temperature	-40°C~+70°C
Power Supply Mode	9V-15V DC, optional POE power supply
Typical Power Consumption	≤2.4W
Dimensions	45mm×44mm×60mm (without lens)
Weight	About 110g (without lens)

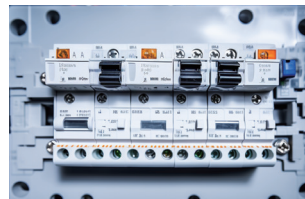
## Applications



Machine Vision



Industrial Automation



Electric Routine Inspection



Rail Transportation

## Raythink Technology Co., Ltd.

✉ sales@raythink-tech.com

☎ +86-19806191838

🌐 www.raythink-tech.com

📍 Room 3002, Building 2, No.5 Wanshoushan Road, Fulaishan Street, Yantai Area of China (Shandong) Pilot Free Trade Zone

■ This manual is illustrative only. Technical specifications are subject to change without prior notice.